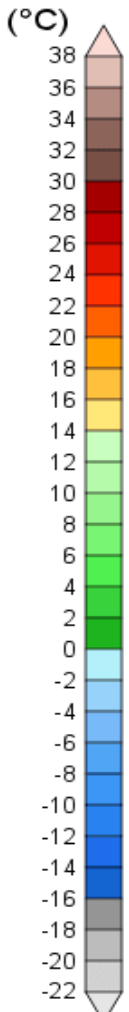
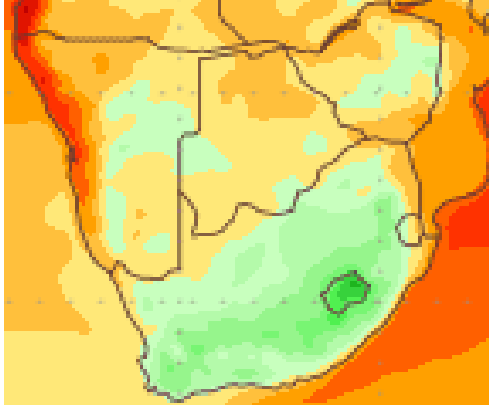
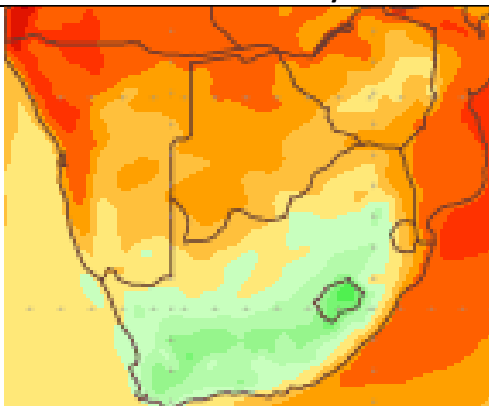
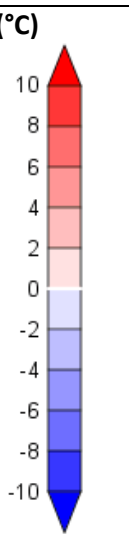
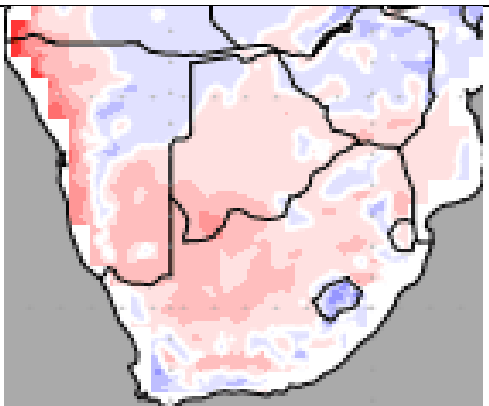
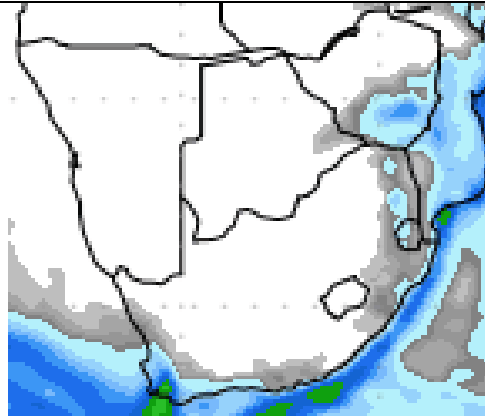
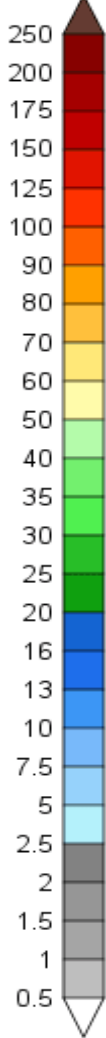


<b>Temperature Forecasts</b>		
	 <p><b>Figure 1: Mean surface temperature for Tuesday 21 June 2016 to Wednesday 29 June 2016</b></p>	<p>Mean temperatures for most parts of South Africa are expected to be between 10 and 14°C for the period, 21 - 29 June 2016.</p>
	 <p><b>Figure 2: Mean surface temperature for Wednesday 29 June 2016 to Thursday 7 July 2016</b></p>	<p>Mean temperatures are expected to be between 14 and 20°C for most of Limpopo, North West, the Northern Cape as well as along the eastern coast of South Africa for the period, 29 June to 7 July 2016.</p> <p>For most of the interior of South Africa and the southern and western Cape, temperatures of between 10 and 14 °C, are expected.</p>
	 <p><b>Figure 3: Temperature anomaly for Tuesday 21 June 2016 to Wednesday 29 June 2016</b></p>	<p>Temperature anomaly for the period, 21 – 29 June 2016.</p> <p>Temperatures for most parts of South Africa will remain higher than normal.</p> <p>Isolated areas, as shown in blue, will experience lower than normal temperatures.</p>
<p>Temperature forecasts from the <b>National Centers for Environmental Prediction</b>.          Normal Temperature derived from CRU monthly climatology for 1901 – 2000          Information from: <a href="http://www.wxmaps.org/outlooks.php">http://www.wxmaps.org/outlooks.php</a>          Credits:          1. The Center for Ocean-Land-Atmosphere Studies          2. George Mason University</p>		

### Precipitation Forecasts

(mm)

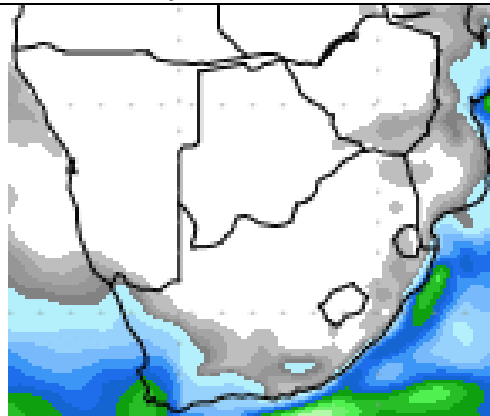


**Figure 4: Precipitation for Tuesday 21 June 2016 to Wednesday 29 June 2016**

Precipitation for the period, 21 June to 29 June 2016.

There is a small probability for rainfall in the north eastern region of the country.

Between 5 and 10 mm is expected in most areas in the Western Cape, but isolated areas may receive up to 30 mm.



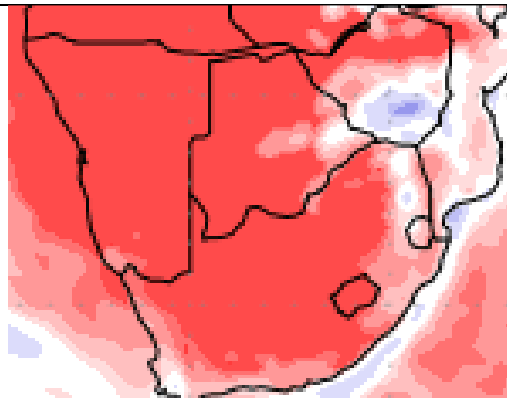
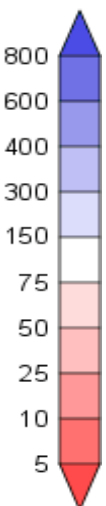
**Figure 5: Precipitation for Wednesday 29 June 2016 to Thursday 7 July 2016**

Precipitation for the period, 29 June to 7 July 2016.

Rainfall between 2 and 5 mm is expected along the coast in KwaZulu-Natal

Rainfall between 5 to 30 mm is expected in the Western Cape.

(% of normal)



**Figure 6: Precipitation (% of normal) for Tuesday 21 June 2016 to Wednesday 29 June 2016**

Precipitation (% of normal) for the period, 21 - 29 June 2016.

The majority of South Africa remains dry with little to no rain expected.

Rainfall along the north eastern region of South Africa as well as the Western Cape is below the long term average for this period.

Precipitation forecasts from the **National Centers for Environmental Prediction**.

Normal rainfall derived from CMAP monthly climatology for 1979 – 2003

Information from: <http://www.wxmaps.org/outlooks.php>

**Credits:**

1. The Center for Ocean-Land-Atmosphere Studies
2. George Mason University

**Official Disclaimer:** *COLA makes no guarantees about and bears no responsibility or liability concerning the accuracy or timeliness of the images being published on these web pages. All images are generated by COLA and do not represent the actual forecasts issued by the National Weather Service. These products are not a substitute for official forecasts and are not guaranteed to be complete or timely. The underlying data are the direct product of the various operational forecast models run by the National Centers for Environmental Prediction, National Weather Service, NOAA and are presented without correction.*

**Monthly Climate Watch reports:** <http://www.manstratais.co.za/climatewatch.aspx>

**Manstrat Website:** <http://www.manstratais.co.za/>

**Social Media:**

**Twitter:** <https://twitter.com/ManstratAIS> or follow @ManstratAIS

**Facebook:** <https://www.facebook.com/manstratais/>