

20 September 2016

Mutsho

(A translation of weather in Tshivenda)

Weekly Weather Forecast



Weekly Outlook - 20 September 2016

Temperature

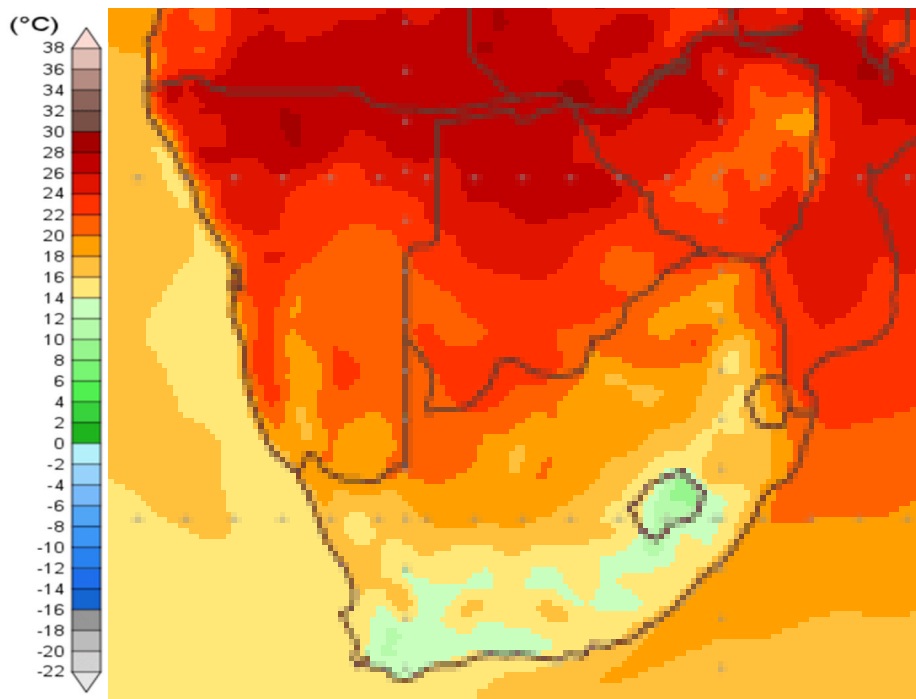


Figure 1: Mean surface temperature from Tuesday 20 September 2016 to Wednesday 28 September 2016

Mean temperatures for most parts of South Africa are expected to be between 14°C and 22°C for the period 20 September to 28 September 2016.

For the Western Cape, temperatures are expected to be between 10°C to 14°C during this period.

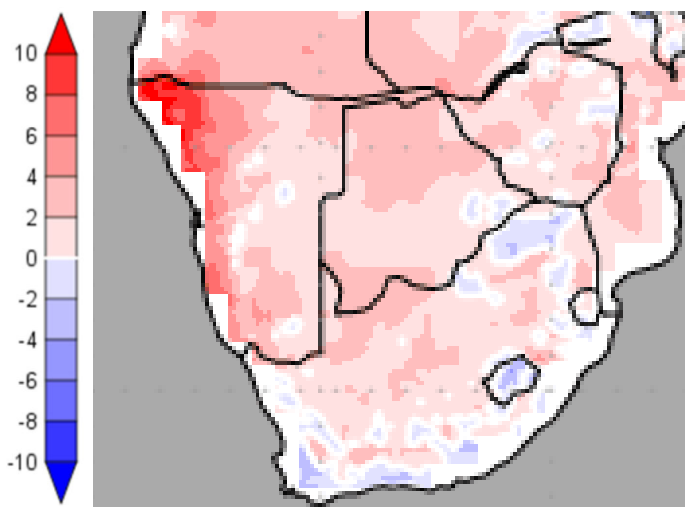


Figure 2: Temperature anomaly for Tuesday 20 September 2016 to Wednesday 28 September 2016

Temperatures for most parts of South Africa are expected to be between 2 to 4 °C warmer than normal. Isolated areas in Limpopo, the Western Cape and along the southern Cape coastline will be between 2 to 4°C colder than normal.

Temperature forecasts from the **National Centers for Environmental Prediction**.
Normal Temperature derived from CRU monthly climatology for 1901 – 2000
Information from: <http://www.wxmaps.org/outlooks.php>

Credits:

1. The Center for Ocean-Land-Atmosphere Studies
2. George Mason University



Rainfall

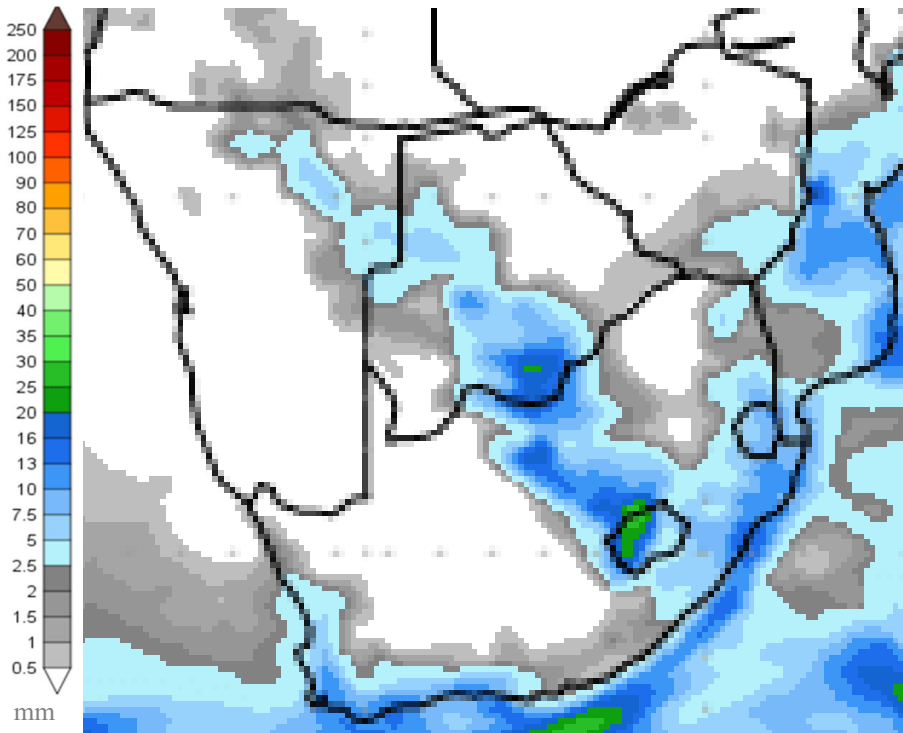


Figure 3: Precipitation for Tuesday 20 September 2016 to Wednesday 28 September 2016

Rainfall is expected over parts of the Northern Cape and North West stretching into the Free State and over most of KwaZulu-Natal. These areas can receive between 10 to 20mm.

Low rainfall (up to 5mm) is expected over the eastern Limpopo and eastern Mpumalanga.

Rainfall up to 20 mm is expected in the Western Cape.

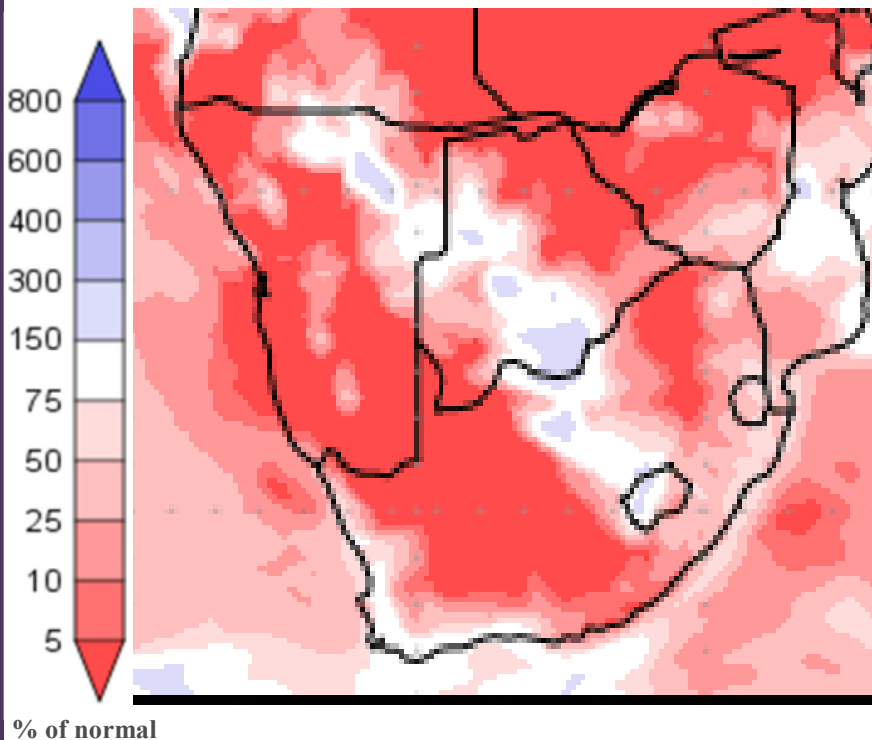


Figure 4: Precipitation (% of normal) for Tuesday 20 September 2016 to Wednesday 28 September 2016

Normal rainfall is expected for the Western Cape as well as parts of the Northern Cape and Free State. Rainfall over KwaZulu-Natal and the eastern Limpopo and eastern Mpumalanga will be below normal for this time of year. The rest of South Africa will remain dry.

Precipitation forecasts from the **National Centers for Environmental Prediction**.

Normal rainfall derived from CMAP monthly climatology for 1979 – 2003

Information from: <http://www.wxmaps.org/outlooks.php>

Credits:

1. The Center for Ocean-Land-Atmosphere Studies
2. George Mason University

Official Disclaimer: COLA makes no guarantees about and bears no responsibility or liability concerning the accuracy or timeliness of the images being published on these web pages. All images are generated by COLA and do not represent the actual forecasts issued by the National Weather Service. These products are not a substitute for official forecasts and are not guaranteed to be complete or timely. The underlying data are the direct product of the various operational forecast models run by the [National Centers for Environmental Prediction](#), [National Weather Service](#), [NOAA](#) and are presented without correction.

Monthly Climate Watch reports: <http://www.manstratais.co.za/climatewatch.aspx>

Manstrat Website: <http://www.manstratais.co.za/>

Twitter: <https://twitter.com/ManstratAIS> or follow @ManstratAIS

Facebook: <https://www.facebook.com/manstratais/>

