

22 November 2016

Mutsho

(A translation of weather in Tshivenda)

Weekly Weather Forecast



Weekly Outlook - 22 November 2016

Temperature

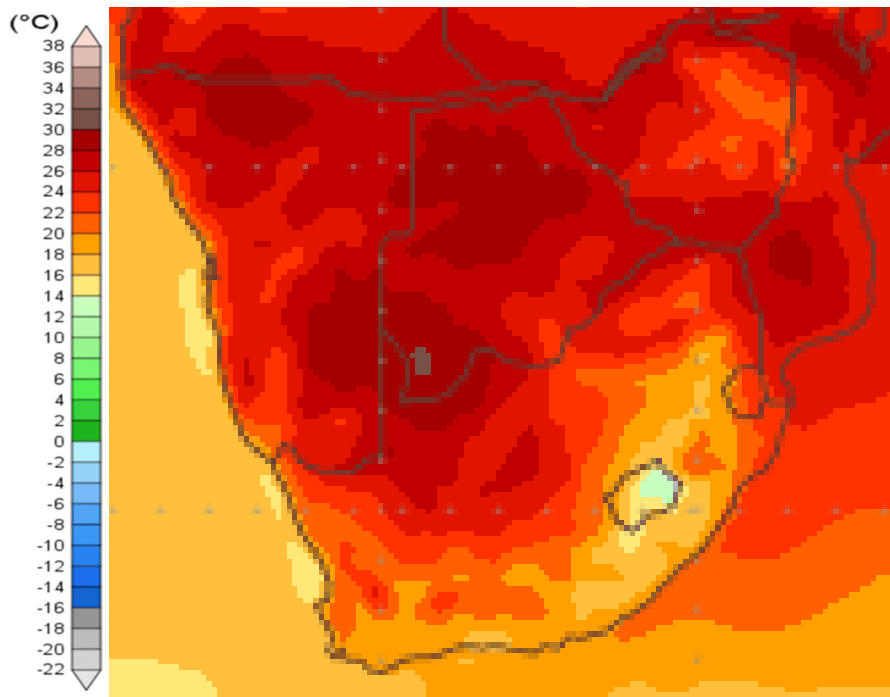


Figure 1: Mean surface temperature from Tuesday 22 November to Wednesday 30 November 2016

Temperatures of 20 to 24°C (dark orange to red colours) are expected in Limpopo, North West, the western Free State and Northern Cape, while cooler temperatures of between 14-20°C can be expected for Gauteng, Mpumalanga, north eastern Free State, KZN, Eastern and Western Cape (yellow to light orange colours).

Note:

Temperatures reflect the average temperatures which includes both minimum and maximum temperatures for a day over an 8 day period.

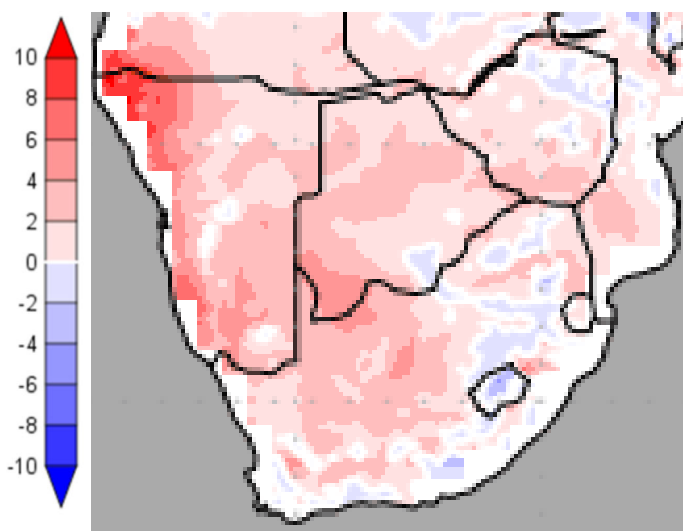


Figure 2: Temperature anomaly for Tuesday 22 November 2016 to Wednesday 30 November 2016

Warmer than normal temperatures is expected for most of South Africa except for isolated areas as shown in blue. The coastal regions can expect normal temperatures for this time of year.

Temperature forecasts from the **National Centers for Environmental Prediction**.
Normal Temperature derived from CRU monthly climatology for 1901 – 2000
Information from: <http://www.wxmaps.org/outlooks.php>

Credits:

1. The Center for Ocean-Land-Atmosphere Studies
2. George Mason University



Rainfall

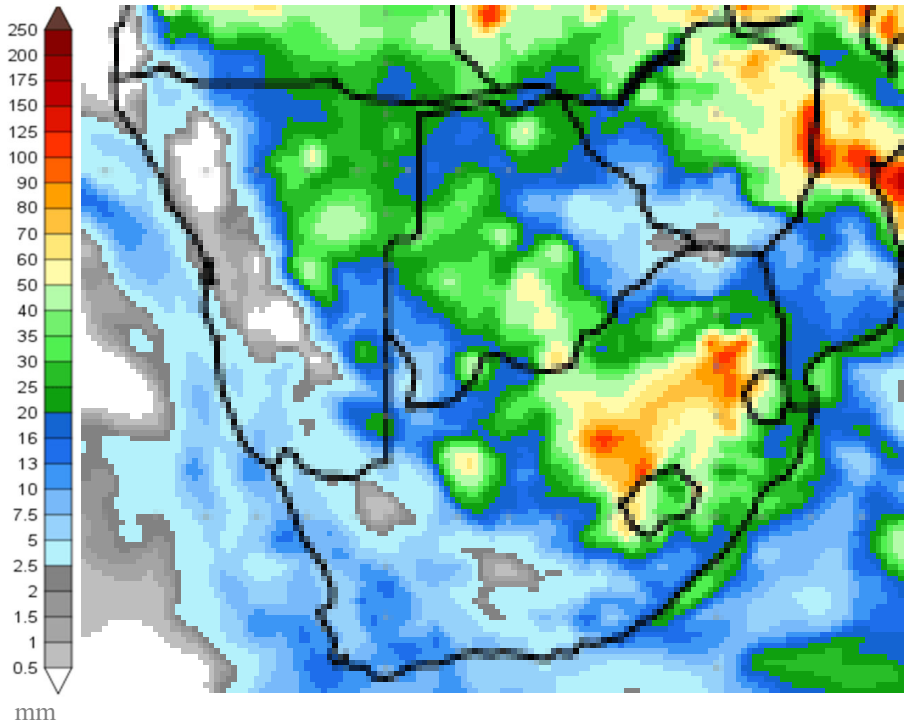


Figure 3: Precipitation for Tuesday 22 November 2016 to Wednesday 30 November 2016

Rainfall is expected over the entire South Africa this week. Highest rainfall is expected North West, Gauteng, Mpumalanga and the northern regions of the Free State with 50 to 100mm expected. Most of the summer rainfall region will receive between 20 to 30 mm while the western parts of South Africa can expect between 2 to 10 mm.

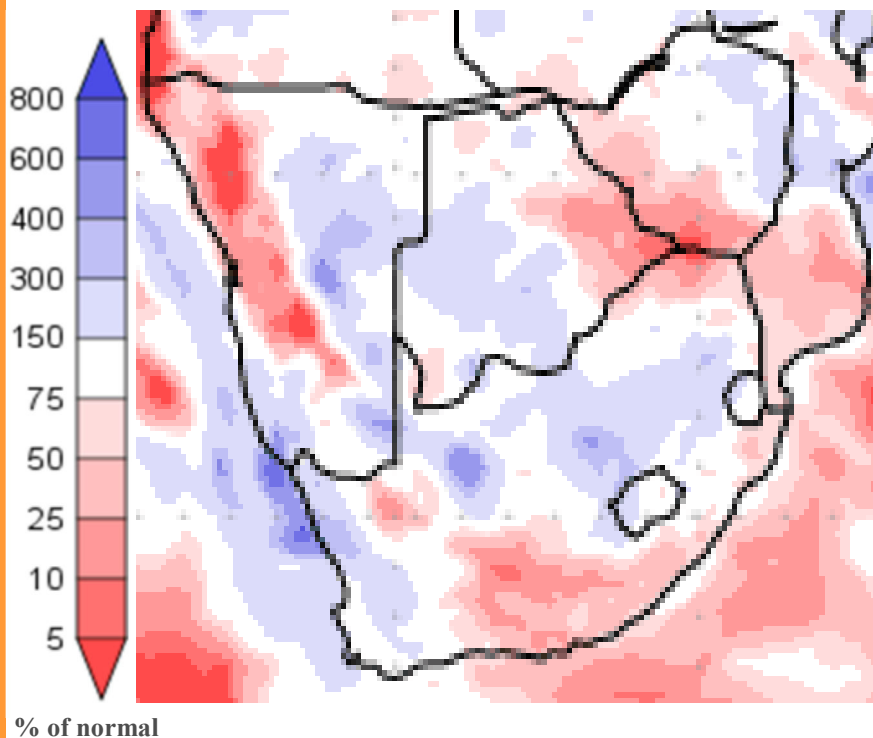


Figure 4: Precipitation (% of normal) for Tuesday 22 November 2016 to Wednesday 30 November 2016

Normal to above normal rainfall is expected over most of South Africa this week. Northern Limpopo, the Eastern Cape and a small area in the Northern Cape (indicated in the red colours) will receive below normal rainfall.

Precipitation forecasts from the **National Centers for Environmental Prediction.**

Normal rainfall derived from CMAP monthly climatology for 1979 – 2003

Information from: <http://www.wxmaps.org/outlooks.php>

Credits:

1. The Center for Ocean-Land-Atmosphere Studies
2. George Mason University

Official Disclaimer: COLA makes no guarantees about and bears no responsibility or liability concerning the accuracy or timeliness of the images being published on these web pages. All images are generated by COLA and do not represent the actual forecasts issued by the National Weather Service. These products are not a substitute for official forecasts and are not guaranteed to be complete or timely. The underlying data are the direct product of the various operational forecast models run by the [National Centers for Environmental Prediction](#), [National Weather Service](#), [NOAA](#) and are presented without correction.

Monthly Climate Watch reports: <http://www.manstratais.co.za/climatewatch.aspx>

Manstrat Website: <http://www.manstratais.co.za/>

Twitter: <https://twitter.com/ManstratAIS> or follow @ManstratAIS

Facebook: <https://www.facebook.com/manstratais/>

