

11 April 2017

Mutsho

(A translation of weather in Tshivenda)

Weekly Weather Forecast

Weekly Outlook: 11 April - 19 April 2017

Temperature

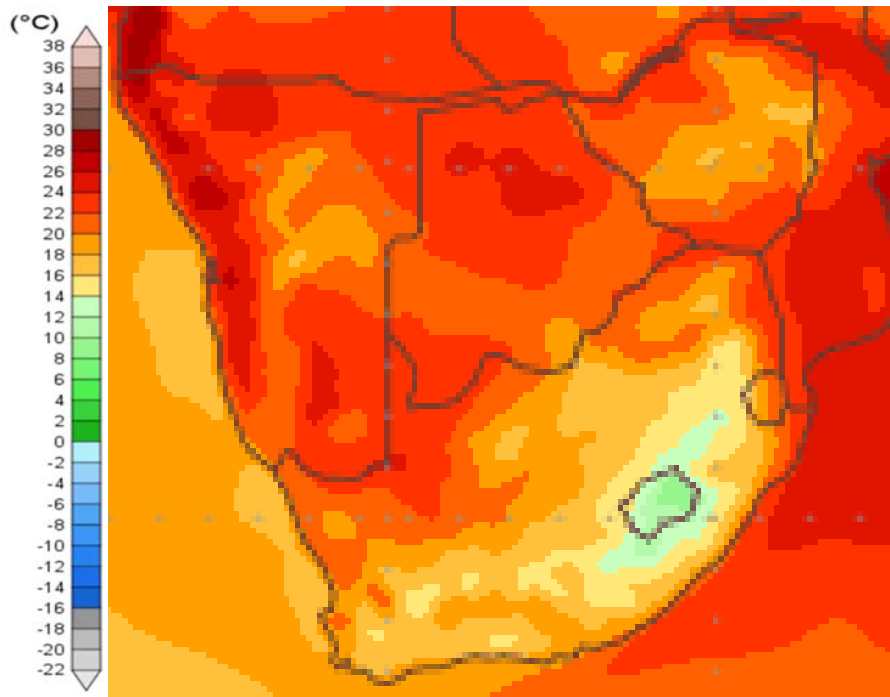


Figure 1: Mean surface temperature from Tuesday 11 April to Wednesday 19 April 2017.

Cooler temperatures, between 14 and 20°C is expected for most of South Africa, while Isolated areas in Limpopo and the northern parts of the Northern Cape will experience temperatures between 20 and 24°C.

Note:

Temperatures reflect daily average temperatures over an 8 day period.

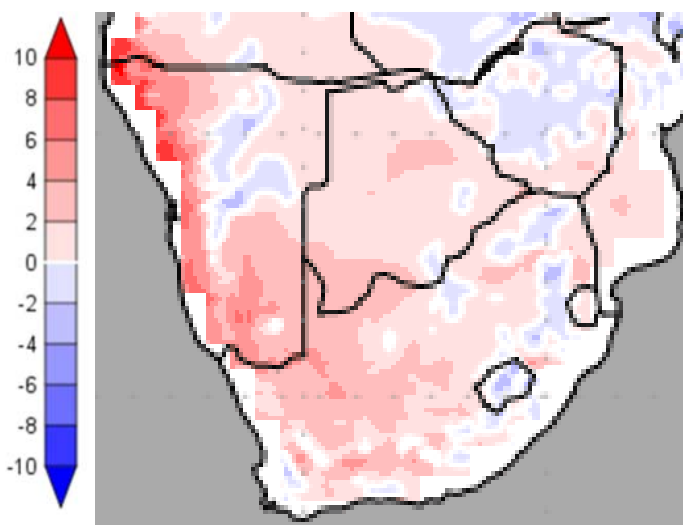


Figure 2: Temperature anomaly for Tuesday 11 April to Wednesday 19 April 2017.

Normal temperatures are expected along the coastal regions of South Africa — the rest of South Africa can expect warmer than normal temperatures for this time of year. Isolated areas in Limpopo and Mpumalanga will experience lower than normal temperatures.

Temperature forecasts from the **National Centers for Environmental Prediction**.

Normal Temperature derived from CRU monthly climatology for 1901 – 2000

Information from: <http://www.wxmaps.org/outlooks.php>

Credits:

1. The Center for Ocean-Land-Atmosphere Studies
2. George Mason University



Rainfall

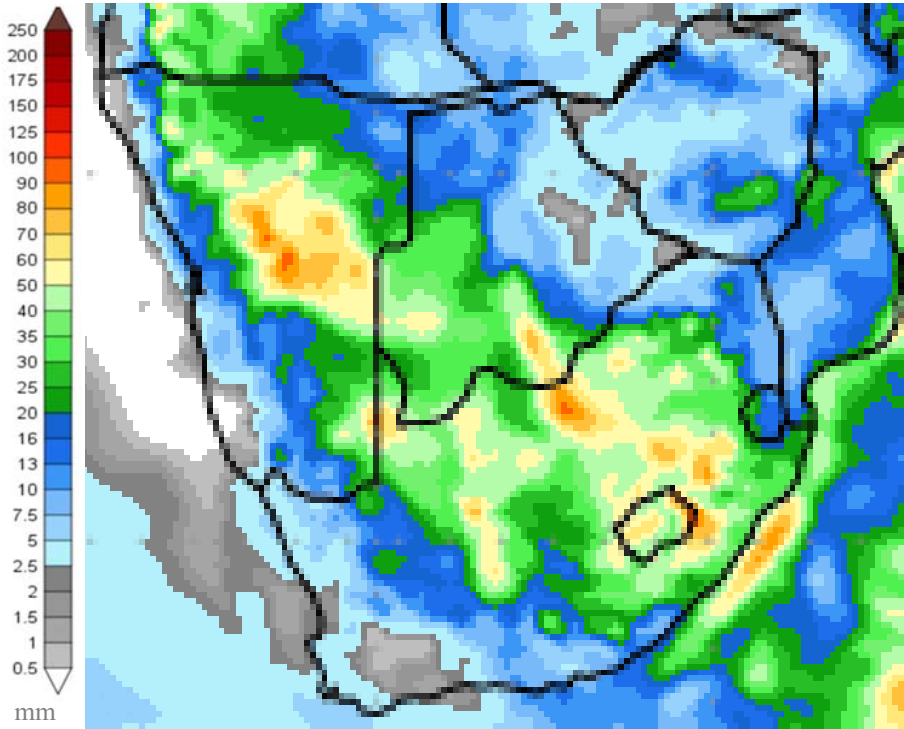


Figure 3: Precipitation for Tuesday 11 April to Wednesday 19 April 2017.

Rain is expected over most areas of South Africa. The highest rainfall is expected for the central and east coast of the country with up to 60mm expected. The Western Cape will receive some much needed rain, although current models don't expect it to exceed 5mm.

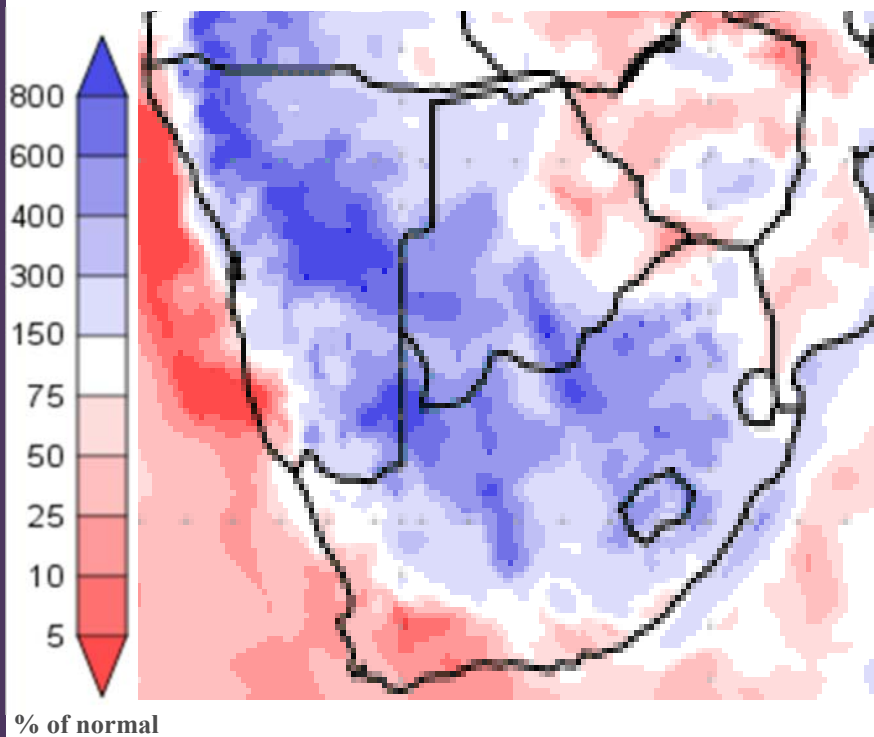


Figure 4: Precipitation (% of normal) for Tuesday 11 April to Wednesday 19 April 2017.

The southern Cape and west coast will remain dryer than normal. The rest of South Africa will receive higher than normal rainfall for this time of year.

Precipitation forecasts from the **National Centers for Environmental Prediction**.

Normal rainfall derived from CMAP monthly climatology for 1979 – 2003

Information from: <http://www.wxmaps.org/outlooks.php>

Credits:

1. The Center for Ocean-Land-Atmosphere Studies
2. George Mason University

Official Disclaimer: COLA makes no guarantees about and bears no responsibility or liability concerning the accuracy or timeliness of the images being published on these web pages. All images are generated by COLA and do not represent the actual forecasts issued by the National Weather Service. These products are not a substitute for official forecasts and are not guaranteed to be complete or timely. The underlying data are the direct product of the various operational forecast models run by the [National Centers for Environmental Prediction, National Weather Service, NOAA](#) and are presented without correction.

Monthly Climate Watch reports: <http://www.manstratais.co.za/climatewatch.aspx>

Manstrat Website: <http://www.manstratais.co.za/>

Twitter: <https://twitter.com/ManstratAIS> or follow @ManstratAIS

Facebook: <https://www.facebook.com/manstratais/>

