

18 April 2017

Mutsho

(A translation of weather in Tshivenda)

Weekly Weather Forecast



Weekly Outlook: 18 April - 26 April 2017

Temperature

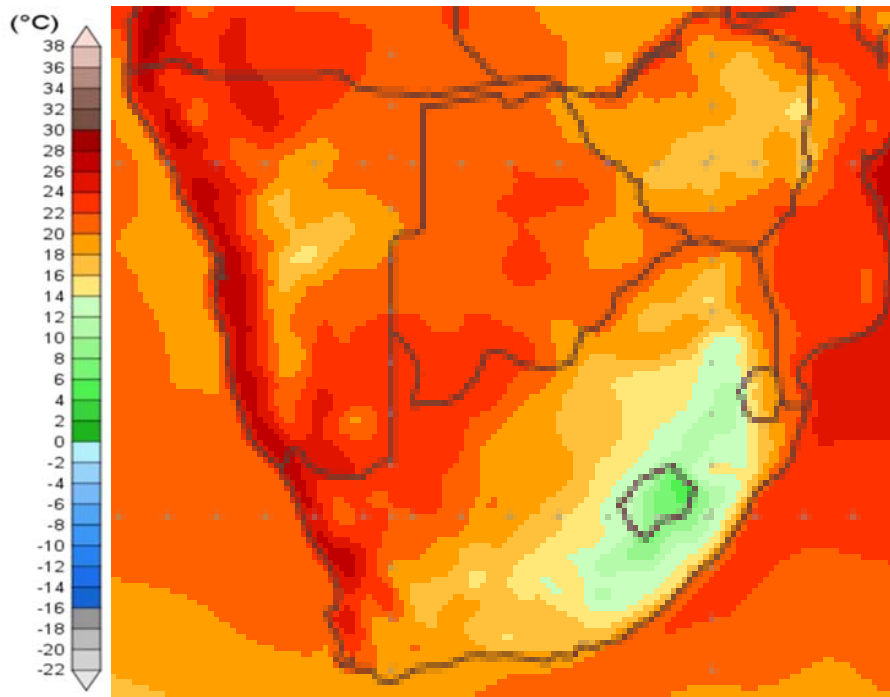


Figure 1: Mean surface temperature from Tuesday 18 April to Wednesday 26 April 2017.

With winter approaching, colder temperatures are setting in over South Africa. While the northern parts of the Northern Cape and the west coast will experience temperatures of between 20 to 24°C, the rest of South Africa will experience average temperatures below 20°. The eastern regions of South Africa, Mpumalanga, KZN and the Eastern Cape will likely experience temperatures of between 8 to 14°C.

Note:

Temperatures reflect daily average temperatures over an 8 day period.

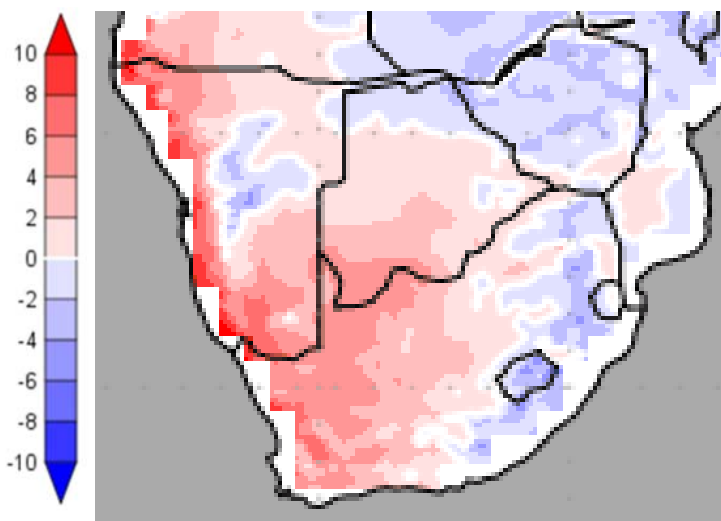


Figure 2: Temperature anomaly for Tuesday 18 April to Wednesday 26 April 2017.

Colder than normal temperatures are expected over Limpopo, Mpumalanga, parts of KZN and the Eastern Cape. Normal temperatures are expected along the coastal regions while the western half of South Africa will experience warmer than normal temperatures for this time of year.

Temperature forecasts from the **National Centers for Environmental Prediction**.

Normal Temperature derived from CRU monthly climatology for 1901 – 2000

Information from: <http://www.wxmaps.org/outlooks.php>

Credits:

1. The Center for Ocean-Land-Atmosphere Studies
2. George Mason University



Rainfall

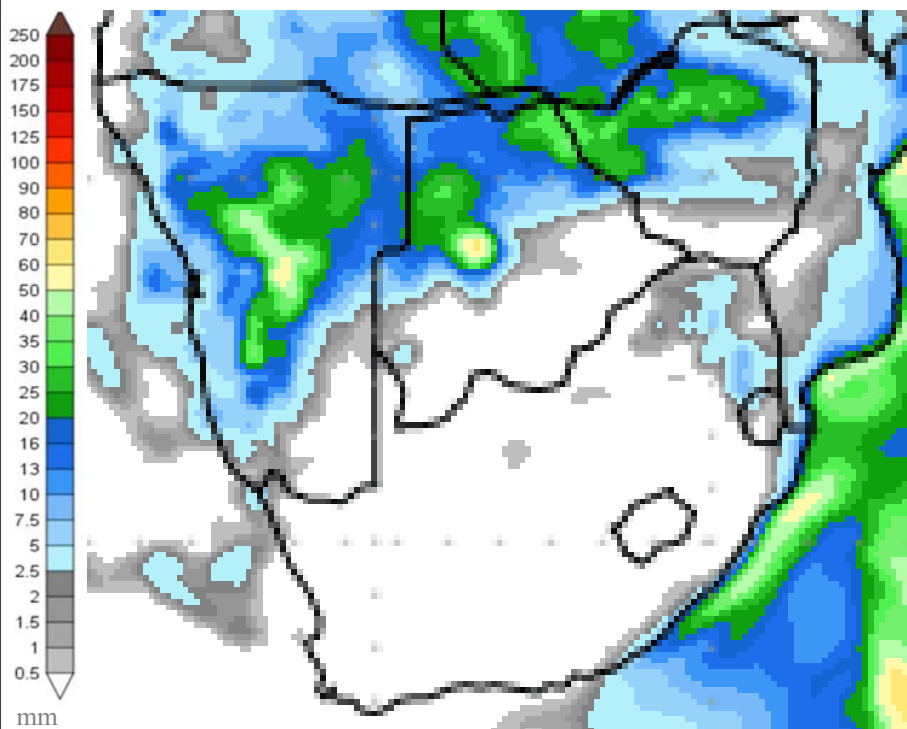


Figure 3: Precipitation for Tuesday 18 April to Wednesday 26 April 2017.

A dry week is expected this week. 5 mm and less rainfall is however expected for Limpopo and eastern Mpumalanga this week.

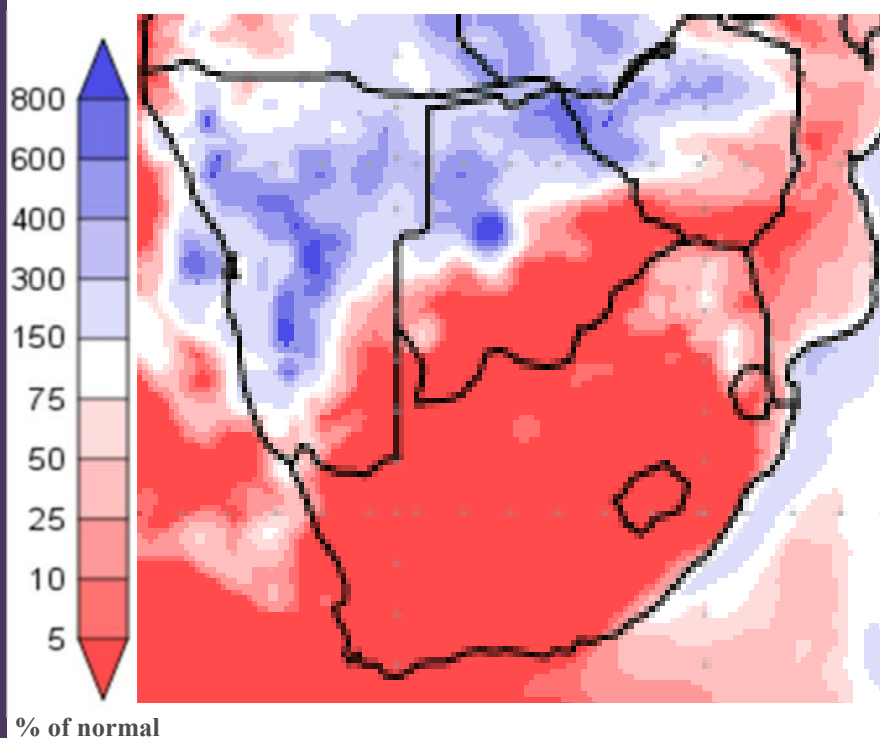


Figure 4: Precipitation (% of normal) for Tuesday 18 April to Wednesday 26 April 2017.

Below normal rainfall is expected over Limpopo and eastern Mpumalanga, while the rest of the country will remain dry with no rain expected.

Precipitation forecasts from the **National Centers for Environmental Prediction**.

Normal rainfall derived from CMAP monthly climatology for 1979 – 2003

Information from: <http://www.wxmaps.org/outlooks.php>

Credits:

1. The Center for Ocean-Land-Atmosphere Studies
2. George Mason University

Official Disclaimer: COLA makes no guarantees about and bears no responsibility or liability concerning the accuracy or timeliness of the images being published on these web pages. All images are generated by COLA and do not represent the actual forecasts issued by the National Weather Service. These products are not a substitute for official forecasts and are not guaranteed to be complete or timely. The underlying data are the direct product of the various operational forecast models run by the [National Centers for Environmental Prediction](#), [National Weather Service](#), [NOAA](#) and are presented without correction.

Monthly Climate Watch reports: <http://www.manstratais.co.za/climatewatch.aspx>

Manstrat Website: <http://www.manstratais.co.za/>

Twitter: <https://twitter.com/ManstratAIS> or follow @ManstratAIS

Facebook: <https://www.facebook.com/manstratais/>

