

09 May 2017

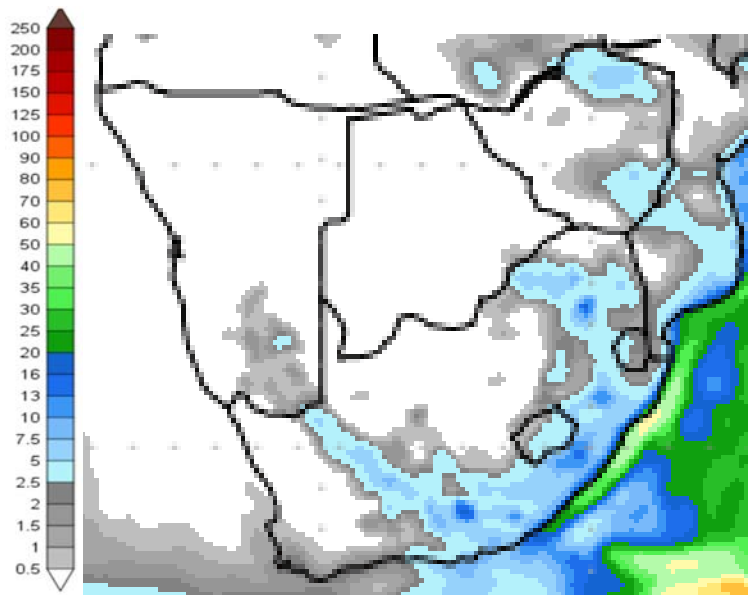
# Mutsho

(A translation of weather in Tshivenda)

## Weekly Weather Forecast

### Weekly Outlook: 9 May - 17 May 2017

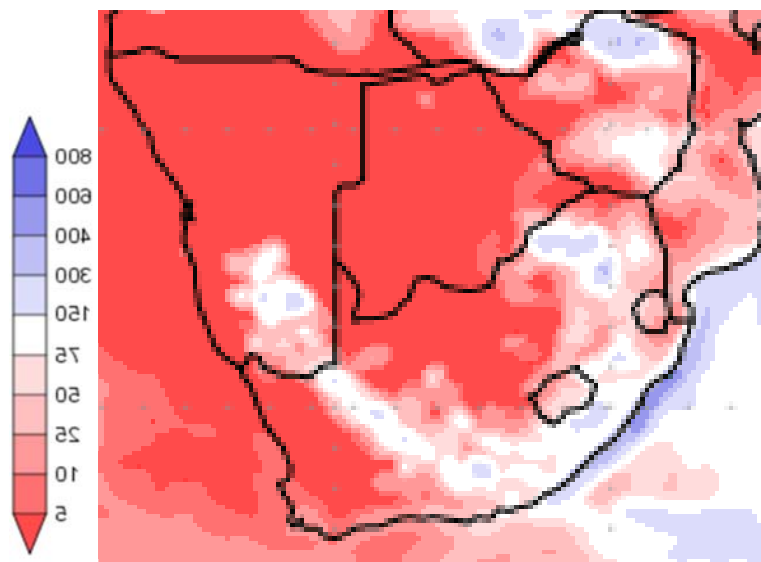
#### Rainfall



mm

*Figure 1: Precipitation for Tuesday 9 May to Wednesday 17 May 2017.*

The western half of South Africa will remain dry this week, but up to 5 mm is expected over KZN, the Eastern Cape, Gauteng, parts of Mpumalanga and southern Limpopo.



% of normal

*Figure 2: Precipitation (% of normal) for Tuesday 9 May to Wednesday 17 May 2017.*

A dry week is expected for South Africa. The areas that will receive rainfall, will receive less rain than normal except for the northern Eastern Cape and southern KZN. Gauteng and parts of south western Limpopo will also receive above normal rainfall.

Precipitation forecasts from the **National Centers for Environmental Prediction**.

Normal rainfall derived from CMAP monthly climatology for 1979 – 2003

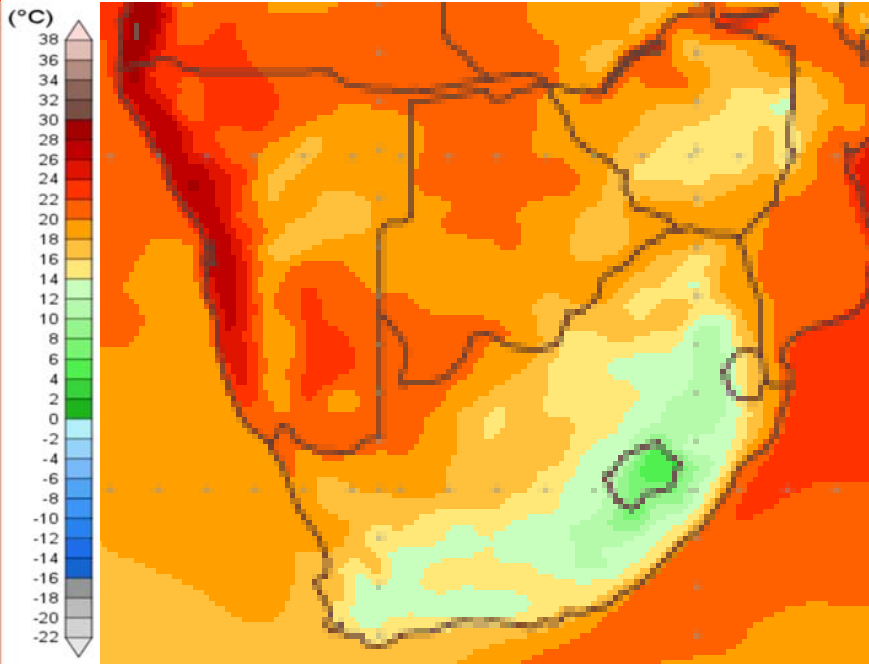
Information from: <http://www.wxmaps.org/outlooks.php>

#### Credits:

1. The Center for Ocean-Land-Atmosphere Studies
2. George Mason University



# Temperature

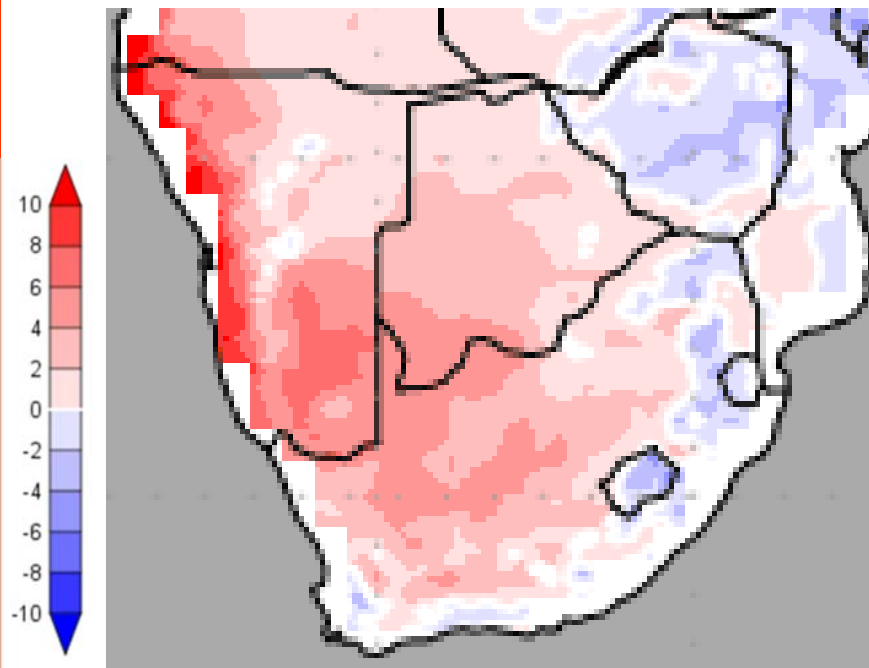


**Figure 3: Mean surface temperature from Tuesday 9 May to Wednesday 17 May 2017.**

A cold week is expected for South Africa with highest average daily temperatures around 22°C in the northern parts of the Northern Cape. For the rest - eastern Free State, Mpumalanga, KZN, Eastern Cape and Western Cape - temperatures around 14°C and lower can be expected. For the western Free State, Gauteng, Limpopo, North West and most of the Northern Cape, temperatures between 14° to 18°C can be expected .

**Note:**

Temperatures reflect daily average temperatures over an 8 day period.



**Figure 4: Temperature anomaly for Tuesday 9 May to Wednesday 17 May 2017.**

Warmer than normal temperatures can be expected for most of South Africa in the coming week, while normal temperatures are expected along the South African coastline. Colder than normal temperatures are expected in parts of Mpumalanga and Limpopo.

Temperature forecasts from the **National Centers for Environmental Prediction.**

Normal Temperature derived from CRU monthly climatology for 1901 – 2000

Information from: <http://www.wxmaps.org/outlooks.php>

Credits:

1. The Center for Ocean-Land-Atmosphere Studies
2. George Mason University

**Official Disclaimer:** COLA makes no guarantees about and bears no responsibility or liability concerning the accuracy or timeliness of the images being published on these web pages. All images are generated by COLA and do not represent the actual forecasts issued by the National Weather Service. These products are not a substitute for official forecasts and are not guaranteed to be complete or timely. The underlying data are the direct product of the various operational forecast models run by the [National Centers for Environmental Prediction](#), [National Weather Service](#), [NOAA](#) and are presented without correction.

Monthly Climate Watch reports: <http://www.manstratais.co.za/climatewatch.aspx>

Manstrat Website: <http://www.manstratais.co.za/>

Twitter: <https://twitter.com/ManstratAIS> or follow @ManstratAIS

Facebook: <https://www.facebook.com/manstratais/>

