

06 June 2017

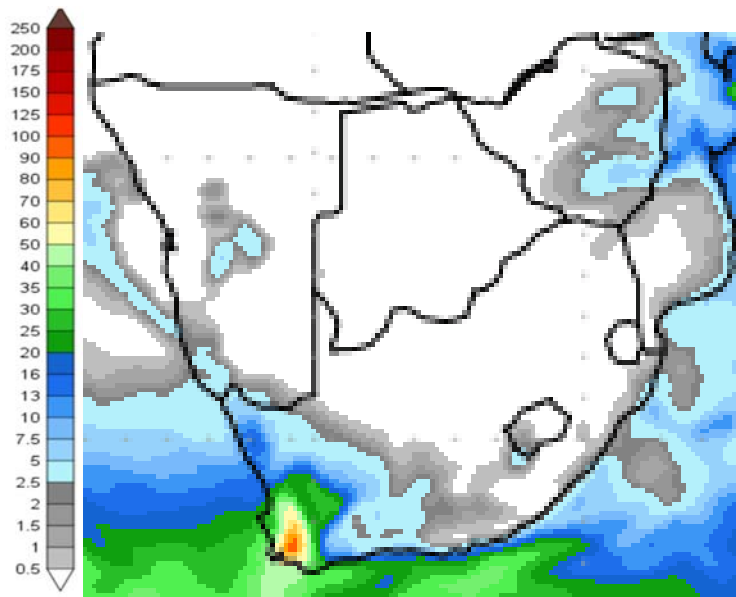
Mutsho

(A translation of weather in Tshivenda)

Weekly Weather Forecast

Weekly Outlook: 6 June - 14 June 2017

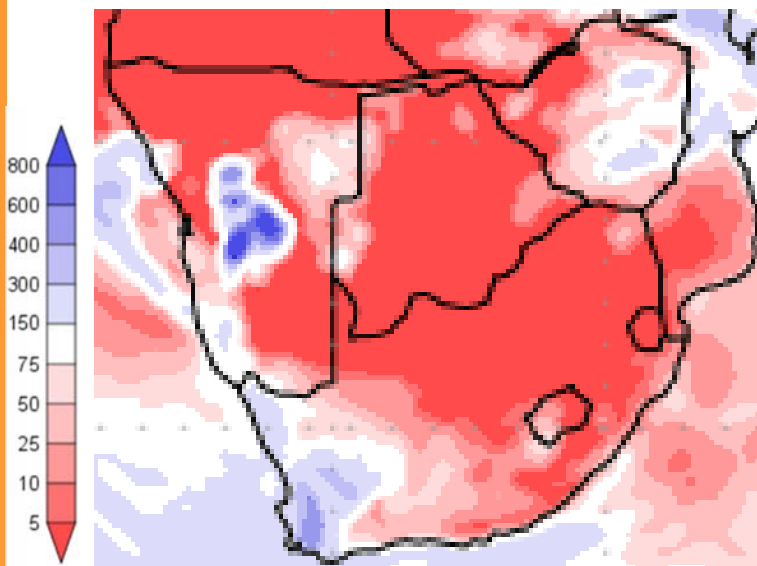
Rainfall



mm

Figure 1: Precipitation for Tuesday 6 June to Wednesday 14 June 2017.

A cold front is expected to make landfall on Tuesday evening over the Western Cape. This system is expected to bring 60 to 100 mm of rain to parts of the province. Large areas of the drought prone Western Cape and western Northern Cape will receive much needed rain as a result of this system. Snowfall is expected over the Eastern Cape and the Drakensberg areas. The rest of South Africa will remain dry.



% of normal

Figure 2: Precipitation (% of normal) for Tuesday 6 June to Wednesday 14 June 2017.

Normal to above normal rainfall is expected over the Western Cape and western Northern Cape. The rest of South Africa will remain dry.

Precipitation forecasts from the **National Centers for Environmental Prediction**.

Normal rainfall derived from CMAP monthly climatology for 1979 – 2003

Information from: <http://www.wxmaps.org/outlooks.php>

Credits:

1. The Center for Ocean-Land-Atmosphere Studies
2. George Mason University



Temperature

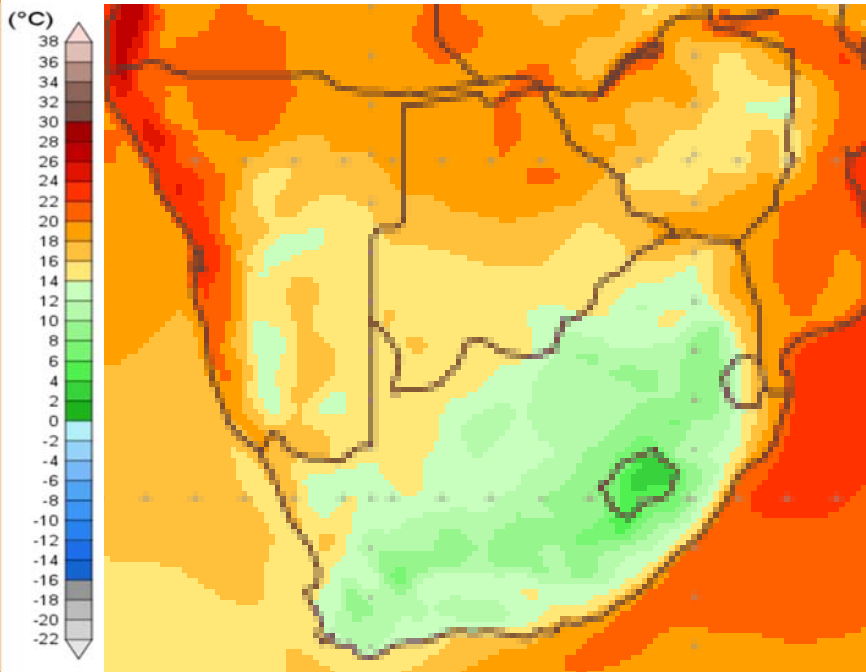


Figure 3: Mean surface temperature from Tuesday 6 June to Wednesday 14 June 2017.

Average daily temperatures of below 14°C will be dominant across South Africa as a result of the cold front making landfall this week. Snowfalls are expected over the high lying mountain areas of the Eastern Cape as well as the Drakensberg.

Note:

Temperatures reflect daily average temperatures over an 8 day period.

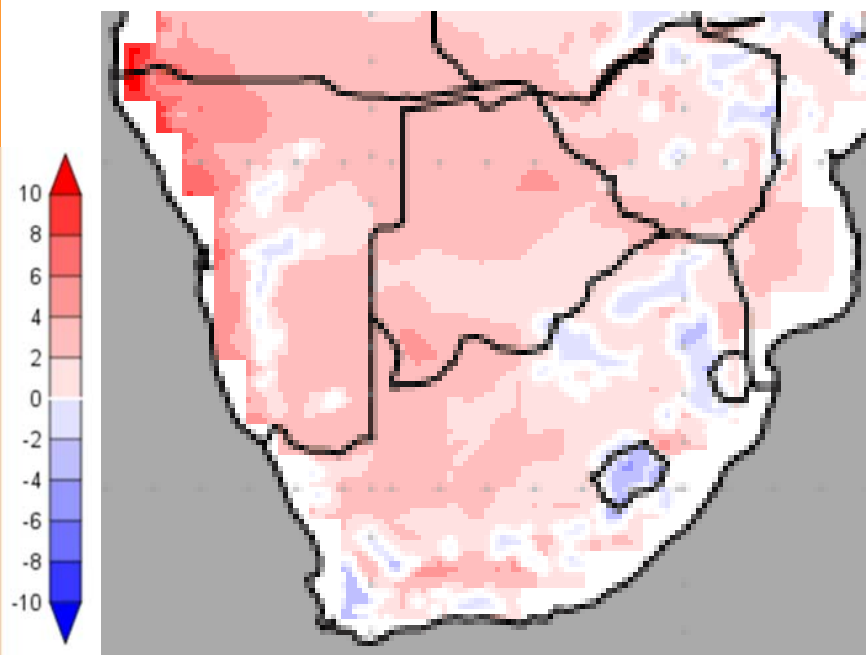


Figure 4: Temperature anomaly for Tuesday 6 June to Wednesday 14 June 2017.

Despite the cold front making landfall this week, average daily temperatures remain higher than normal for this time of year. Normal temperatures are expected along the coastal regions while colder than normal temperatures are expected over a small part of the Western Cape and parts of Mpumalanga, Limpopo and North West as indicated with the blue colours.

Temperature forecasts from the **National Centers for Environmental Prediction.**

Normal Temperature derived from CRU monthly climatology for 1901 – 2000

Information from: <http://www.wxmaps.org/outlooks.php>

Credits:

1. The Center for Ocean-Land-Atmosphere Studies
2. George Mason University

Official Disclaimer: COLA makes no guarantees about and bears no responsibility or liability concerning the accuracy or timeliness of the images being published on these web pages. All images are generated by COLA and do not represent the actual forecasts issued by the National Weather Service. These products are not a substitute for official forecasts and are not guaranteed to be complete or timely. The underlying data are the direct product of the various operational forecast models run by the National Centers for Environmental Prediction, National Weather Service, NOAA and are presented without correction.

Monthly Climate Watch reports: <http://www.manstratais.co.za/climatewatch.aspx>

Manstrat Website: <http://www.manstratais.co.za/>

Twitter: <https://twitter.com/ManstratAIS> or follow @ManstratAIS

Facebook: <https://www.facebook.com/manstratais/>

