

13 June 2017

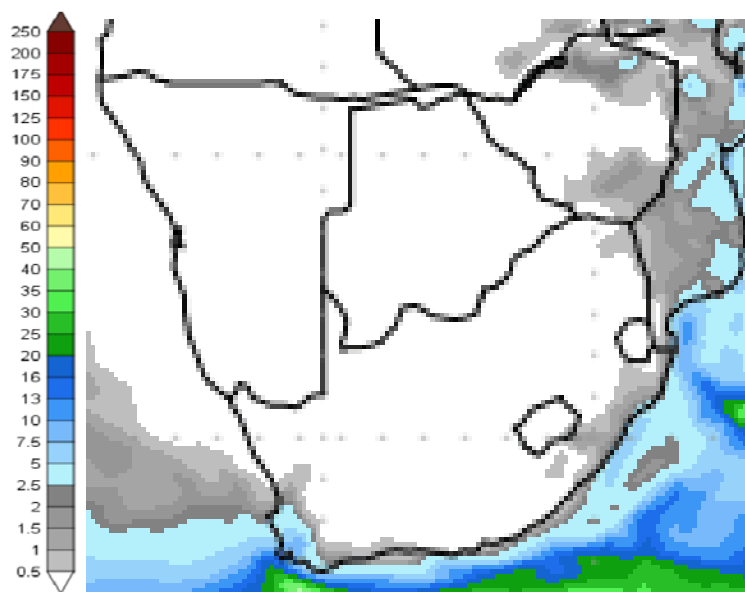
# Mutsho

(A translation of weather in Tshivenda)

Weekly Weather Forecast

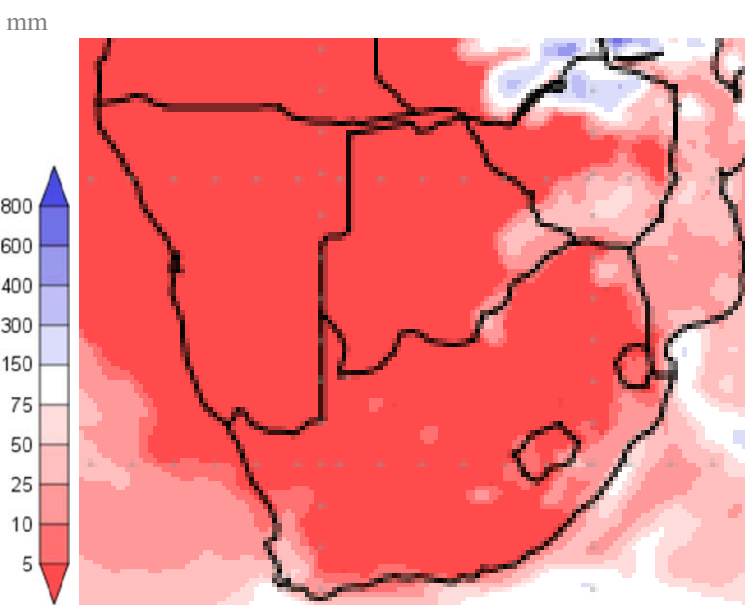
## Weekly Outlook: 13 June - 21 June 2017

### Rainfall



*Figure 1: Precipitation for Tuesday 13 June to Wednesday 21 June 2017.*

The Western Cape can expect a little rain (between 5 to 10 mm), with a dry week ahead for the rest of the country.



*Figure 2: Precipitation (% of normal) for Tuesday 13 June to Wednesday 21 June 2017.*

Rainfall over the Western Cape will be below normal for this time of year, with no rain for the rest of the country.

% of normal

Precipitation forecasts from the **National Centers for Environmental Prediction**.

Normal rainfall derived from CMAP monthly climatology for 1979 – 2003

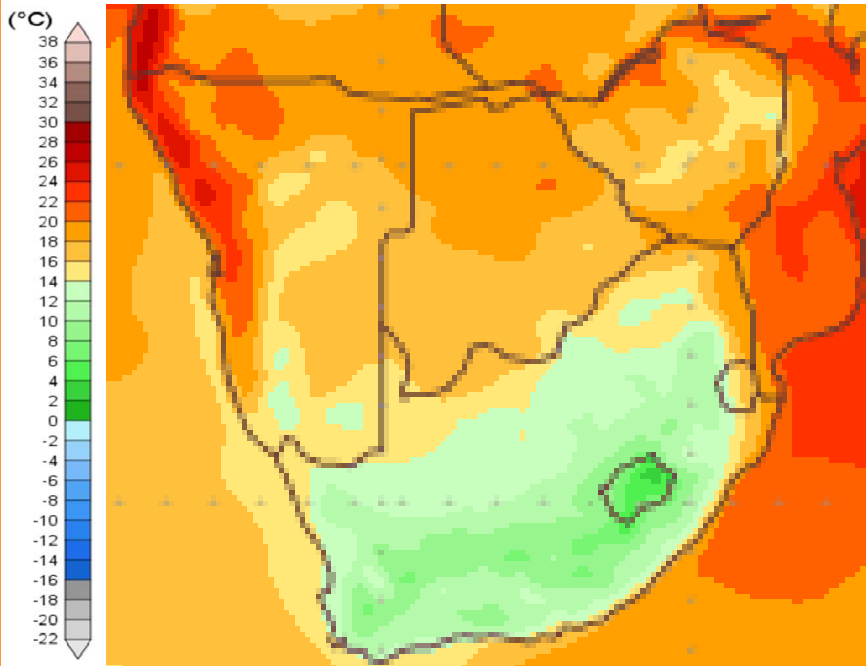
Information from: <http://www.wxmaps.org/outlooks.php>

#### Credits:

1. The Center for Ocean-Land-Atmosphere Studies
2. George Mason University



# Temperature

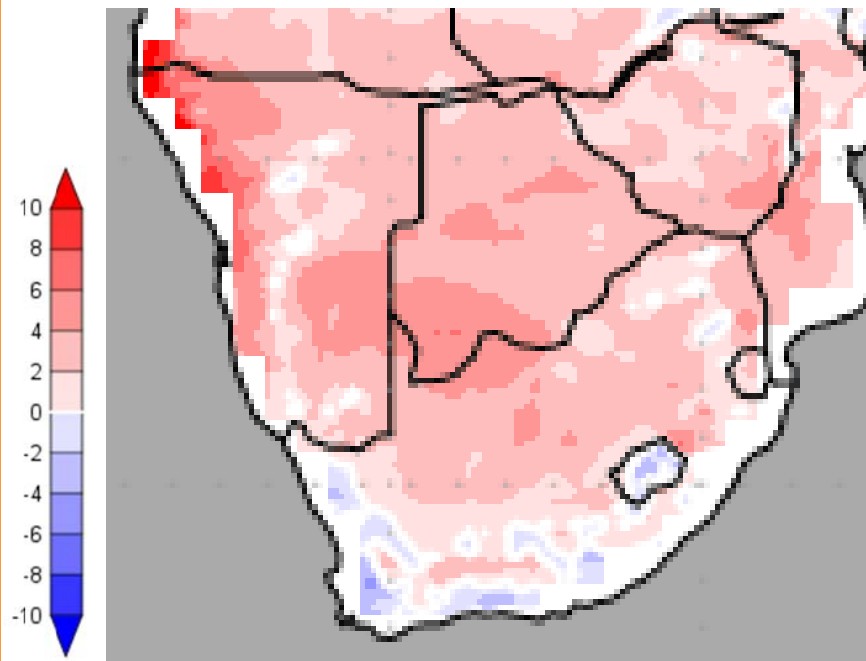


**Figure 3: Mean surface temperature from Tuesday 13 June to Wednesday 21 June 2017.**

Average daily temperatures of below 14°C will be the norm across South Africa. Temperatures between 14 and 18°C are expected over Limpopo and the northern part of the Northern Cape.

**Note:**

Temperatures reflect daily average temperatures over an 8 day period.



**Figure 4: Temperature anomaly for Tuesday 13 June to Wednesday 21 June 2017.**

Warmer than normal temperatures for this time of year are forecast for most of South Africa in the coming week. Normal temperatures are expected along the coastal regions while colder than normal temperatures are expected in the western Northern Cape, parts of the Western & Eastern Cape.

Temperature forecasts from the **National Centers for Environmental Prediction.**

Normal Temperature derived from CRU monthly climatology for 1901 – 2000

Information from: <http://www.wxmaps.org/outlooks.php>

Credits:

1. The Center for Ocean-Land-Atmosphere Studies
2. George Mason University

**Official Disclaimer:** *COLA makes no guarantees about and bears no responsibility or liability concerning the accuracy or timeliness of the images being published on these web pages. All images are generated by COLA and do not represent the actual forecasts issued by the National Weather Service. These products are not a substitute for official forecasts and are not guaranteed to be complete or timely. The underlying data are the direct product of the various operational forecast models run by the [National Centers for Environmental Prediction](#), [National Weather Service](#), [NOAA](#) and are presented without correction.*

Monthly Climate Watch reports: <http://www.manstratais.co.za/climatewatch.aspx>

Manstrat Website: <http://www.manstratais.co.za/>

Twitter: <https://twitter.com/ManstratAIS> or follow @ManstratAIS

Facebook: <https://www.facebook.com/manstratais/>

