

20 June 2017

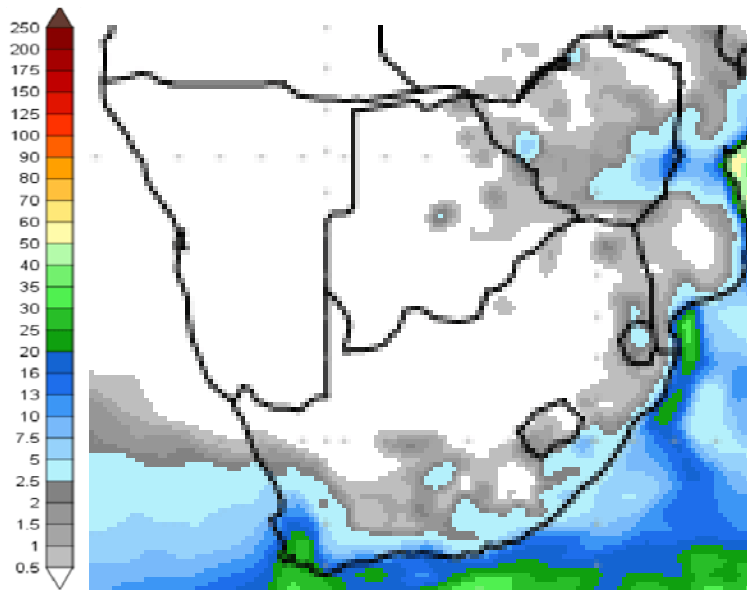
Mutsho

(A translation of weather in Tshivenda)

Weekly Weather Forecast

Weekly Outlook: 20 June - 28 June 2017

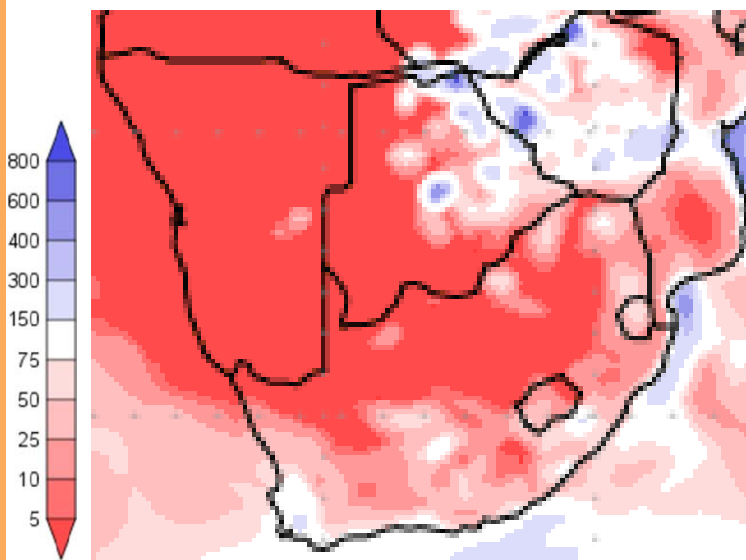
Rainfall



mm

Figure 1: Precipitation for Tuesday 20 June to Wednesday 28 June 2017.

Rain of between 10 and 30mm is predicted for large parts of the Western Cape during the coming week. Rain is also expected along the eastern coast of South Africa with about 5 mm expected for the Eastern Cape.



% of normal

Figure 2: Precipitation (% of normal) for Tuesday 20 June to Wednesday 28 June 2017.

Normal rainfall is expected for the Western Cape for this time of year. Rainfall expected for the rest of the country is below normal.

Precipitation forecasts from the **National Centers for Environmental Prediction**.

Normal rainfall derived from CMAP monthly climatology for 1979 – 2003

Information from: <http://www.wxmaps.org/outlooks.php>

Credits:

1. The Center for Ocean-Land-Atmosphere Studies
2. George Mason University



Temperature

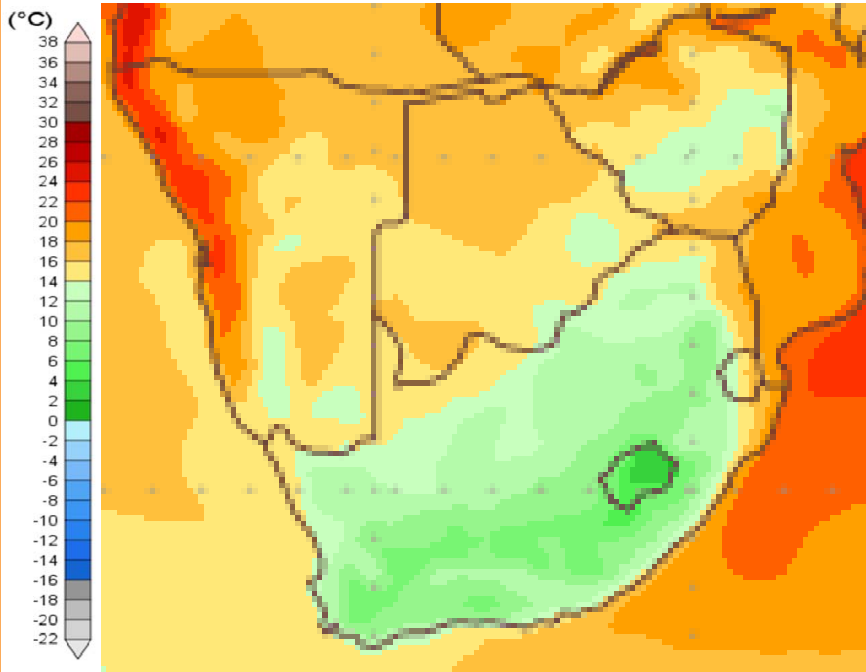


Figure 3: Mean surface temperature from Tuesday 20 June to Wednesday 28 June 2017.

Average daily temperatures of below 14°C will be the norm across South Africa.

Note:

Temperatures reflect daily average temperatures over an 8 day period.

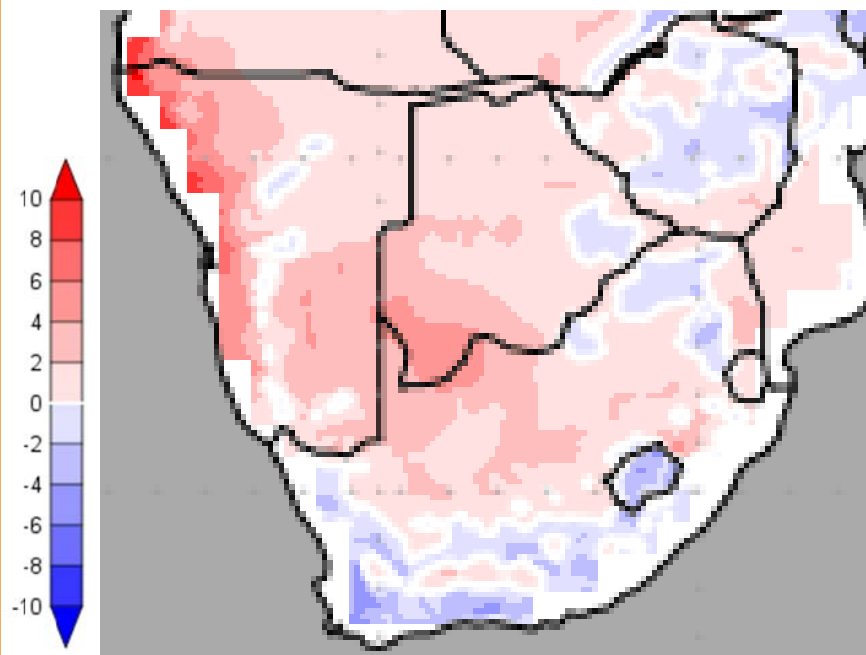


Figure 4: Temperature anomaly for Tuesday 20 June to Wednesday 28 June 2017.

Normal temperatures are expected along the coastal regions, while colder than normal temperatures can be expected in the Western and Eastern Cape provinces. Colder temperatures are also expected over eastern Mpumalanga and most parts of Limpopo. Most of the Northern Cape, Free State and Gauteng will experience warmer than normal temperatures.

Temperature forecasts from the **National Centers for Environmental Prediction.**

Normal Temperature derived from CRU monthly climatology for 1901 – 2000

Information from: <http://www.wxmaps.org/outlooks.php>

Credits:

1. The Center for Ocean-Land-Atmosphere Studies
2. George Mason University

Official Disclaimer: *COLA makes no guarantees about and bears no responsibility or liability concerning the accuracy or timeliness of the images being published on these web pages. All images are generated by COLA and do not represent the actual forecasts issued by the National Weather Service. These products are not a substitute for official forecasts and are not guaranteed to be complete or timely. The underlying data are the direct product of the various operational forecast models run by the [National Centers for Environmental Prediction](#), [National Weather Service](#), [NOAA](#) and are presented without correction.*

Monthly Climate Watch reports: <http://www.manstratais.co.za/climatewatch.aspx>

Manstrat Website: <http://www.manstratais.co.za/>

Twitter: <https://twitter.com/ManstratAIS> or follow @ManstratAIS

Facebook: <https://www.facebook.com/manstratais/>

