

27 June 2017

Mutsho

(A translation of weather in Tshivenda)

Weekly Weather Forecast

Weekly Outlook: 27 June - 5 July 2017

Rainfall

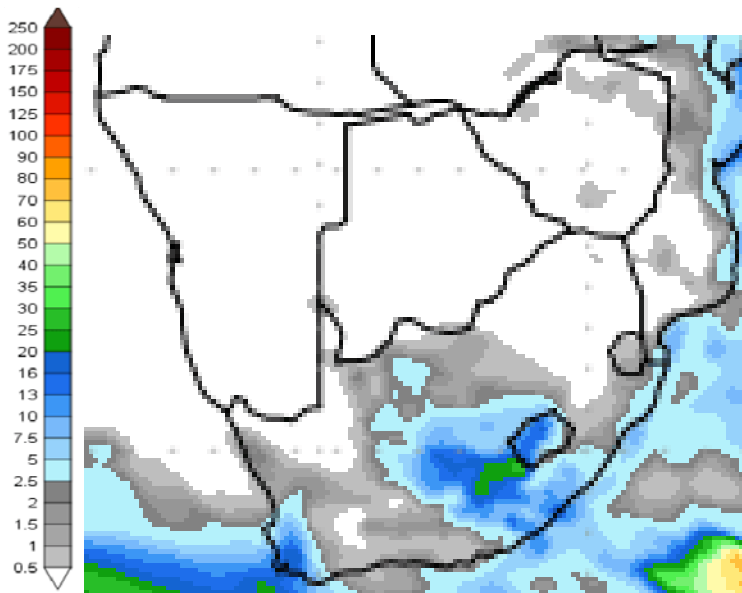


Figure 1: Precipitation for Tuesday 27 June to Wednesday 5 July 2017.

Western Cape:

Expected rainfall - 10mm.

Central & southern Free State:

Between 5 –10 mm expected.

Northern Cape:

2 –5mm expected over the south eastern region of the province.

Eastern Cape:

Between 5 –10mm expected, with up to 30mm in isolated areas.

mm

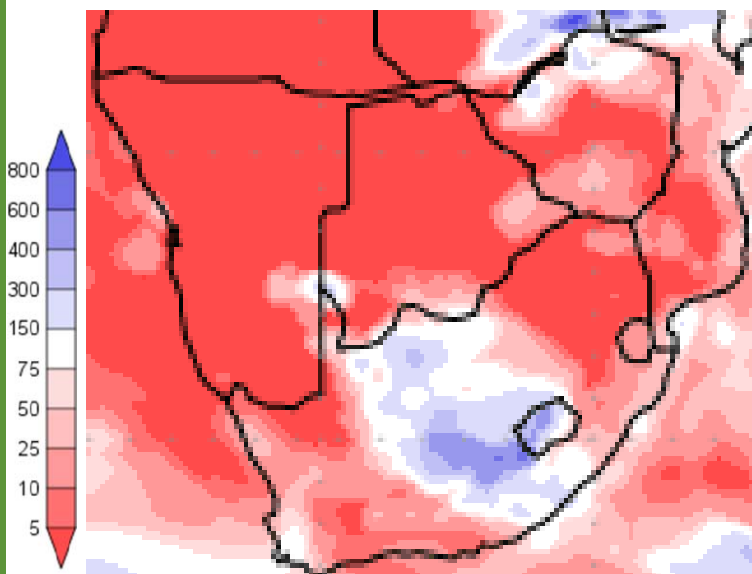


Figure 2: Precipitation (% of normal) for Tuesday 20 June to Wednesday 28 June 2017.

Central South Africa:

Expected rainfall for this area — normal to above normal over the region, stretching from the Northern Cape, through the central & southern Free State to the Eastern Cape.

Western Cape:

Normal rainfall is expected for a small area while the rest of the province can expect below-normal rainfall.

% of

Precipitation forecasts from the **National Centers for Environmental Prediction.**

Normal rainfall derived from CMAP monthly climatology for 1979 – 2003

Information from: <http://www.wxmaps.org/outlooks.php>

Credits:

1. The Center for Ocean-Land-Atmosphere Studies
2. George Mason University



Temperature

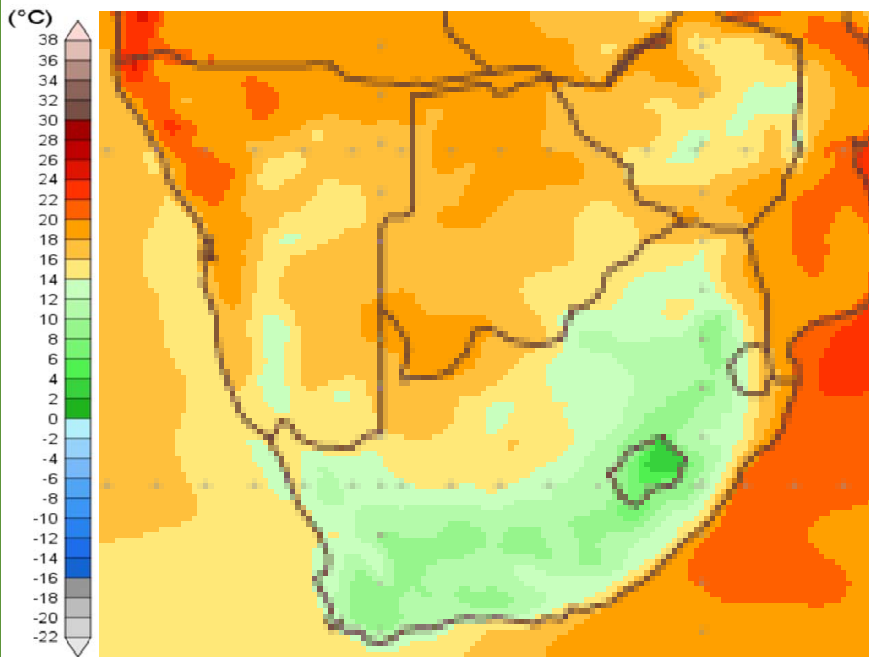


Figure 3: Mean surface temperature from Tuesday 27 June to Wednesday 5 July 2017.

Eastern Northern Cape and the northern parts of Limpopo:

Expected average temperatures — between 16 and 20°C.

Rest of South Africa:

Average temperatures of below 14°C expected.

Note:

Temperatures reflect daily average temperatures over an 8 day period.

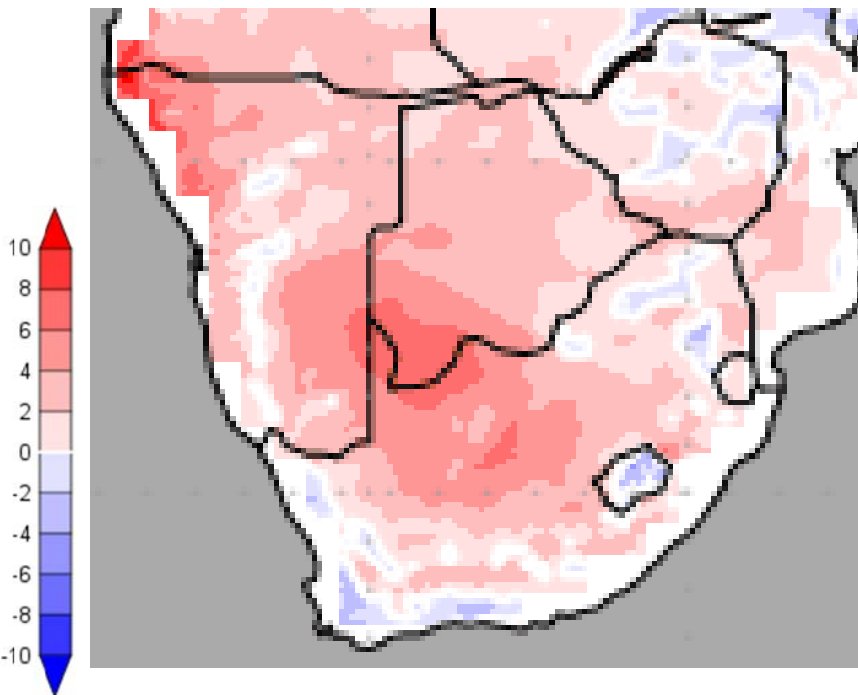


Figure 4: Temperature anomaly for Tuesday 27 June to Wednesday 5 July 2017 Temperatures expected

Coastal Regions:

Normal temperatures.

Western Cape & southern Cape:

Colder than normal temperatures.

Isolated areas in Limpopo & Mpumalanga:

Colder than normal temperatures.

Rest of South Africa:

Warmer than normal temperatures.

Temperature forecasts from the **National Centers for Environmental Prediction.**

Normal Temperature derived from CRU monthly climatology for 1901 – 2000

Information from: <http://www.wxmaps.org/outlooks.php>

Credits:

1. The Center for Ocean-Land-Atmosphere Studies
2. George Mason University

Official Disclaimer: *COLA makes no guarantees about and bears no responsibility or liability concerning the accuracy or timeliness of the images being published on these web pages. All images are generated by COLA and do not represent the actual forecasts issued by the National Weather Service. These products are not a substitute for official forecasts and are not guaranteed to be complete or timely. The underlying data are the direct product of the various operational forecast models run by the [National Centers for Environmental Prediction](#), [National Weather Service](#), [NOAA](#) and are presented without correction.*

Monthly Climate Watch reports: <http://www.manstratais.co.za/climatewatch.aspx>

Manstrat Website: <http://www.manstratais.co.za/>

Twitter: <https://twitter.com/ManstratAIS> or follow @ManstratAIS

Facebook: <https://www.facebook.com/manstratais/>

